

Dx-Series CO₂ Laser Coders

Coding with the energy of light

The **Dx260i** and **Dx360i** are an ideal solution for in-production-line printing requirements, applying traceability codes permanently to products and packaging in a quality that complements the look of your product.

Meeting Industry 4.0 standards they are ready for today's fast-paced production and integrate seamlessly into your production environment.

Options for automated label deployment and remote monitoring and diagnostics via

Domino Cloud help to reduce human intervention, errors and downtime.



Safe, simple, reliable

From finding the best solution for your application to installation and support throughout the lifetime of your Domino laser coding systems our experts are at your side.

- ◆ **Testing** in our Sample Lab defines the ideal laser configuration.
- ◆ **Perfect fit:** Domino offers bespoke customisation including laser safeguarding; mounting is possible in almost any orientation with a 360° rotatable scan head, and more than 50 beam delivery positions.
- ◆ **Safety** is paramount when operating laser systems: laser guarding, extraction to remove particles that can damage equipment and reduce code quality, proper installation, prevention of access in operation – we have you covered.
- ◆ **Support:** **Dx-Series** laser systems rarely need attention, but if they do, we're here to help: Utilising AR we can troubleshoot many issues remotely; should on-site support be needed, our technicians will come prepared to get your line running as fast as possible.

Permanent traceability coding in excellent quality



PET – ideal for the beverage industry with IP65 protection option and designed for high production rates.



Paper based food wrapper – marking algorithms that are gentle to modern, sustainable packaging developments keeping protective barriers intact.



Label – **Dx-Series** stands for high precision and seamless integration into labelling machinery.



Card – excellent printing performance for both human and machine readable codes.

www.domino-printing.com

Domino. Do more.



A complete solution

Our services are designed to provide operational insight so you can eliminate downtime and maximise production efficiency.

Operational support

An outstanding level of care, wherever you are. Our **SafeGuard** packages provide high-quality, on-site assistance and AR-enabled remote guidance from our engineers. **SafeGuard** helps to ensure we can be with you when you need us most.

Automatic code inspection

Ensure every code that leaves your factory is present and correct, and free up operator time. With the **R-Series**, Domino's range of vision control systems, you can automate your code inspection to validate code presence, placement, and readability.

Automation

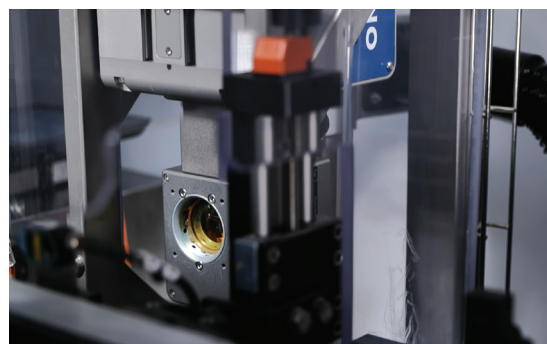
Centralise your label management: **Domino Automation** easily integrates into your manufacturing process as well as your ERP/ MES systems. It makes automatic changeovers safe and simple, helping you to reduce waste and drive sustainability initiatives while increasing productivity and efficiency.

Smart production

Gain operational insight by connecting your printer to **Domino Cloud**. Obtain production analytics dashboards and receive system error alerts. **Domino Cloud** provides you with the information you need to run your operations more efficiently.

Designed for integration

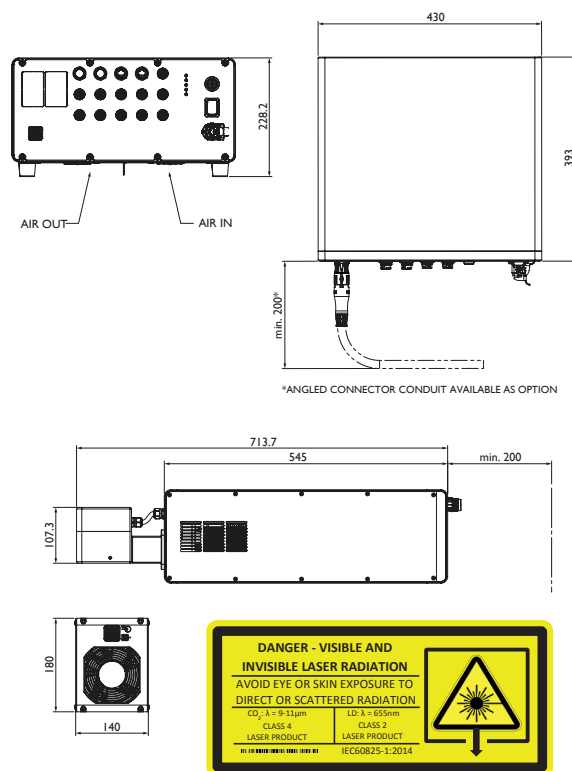
- ◆ Easy operation via the intuitive HMI.
- ◆ Seamless integration into ERP, WMS, MES systems.
- ◆ Bespoke customisation including laser safeguarding ensures a safe installation of your laser coding system.
- ◆ Optimised performance: IP65 printhead option, IP55 controller; and 100% duty cycle at 45°C ambient temperature.
- ◆ Putting you in control: **Coding Automation**, **R-Series** vision control and real-time remote monitoring and diagnostics via **Domino Cloud** ensure only perfectly coded products enter the supply chain.



Technical specification Dx-Series Coding System

Laser Type	Dx260i	Dx360i
Laser technology	CO ₂	CO ₂
Laser source	20W, wavelengths 9.3, 10.2, 10.6 µm	30W, wavelengths 9.3, 10.2, 10.6 µm
Expected lifetime	50,000h MTBF	
Coding Format		
Coding content	Laser optimised fonts for high-speed marking and standard industrial fonts. Standard industrial machine readable code (1D, 2D) formats (DataMatrix, GS1, QR). Supporting traceability with serialisation data, sequential and batch numbering. Synchronised clock / Network Time Protocol support (NTP)	
Focal length	from 80mm to 600mm	
Marking field	from min. 57x57mm ² to max. 379x582mm ²	
Advanced Features	Aiming beam, Aim & Code	
User Interface		
User Interface	Web based user interface, option to configure multiple parallel access points, optional 10.1" touch panel	
Interface Options	Domino Cloud Interface (DCI), Domino Coding Automation	
System Specification		
Scan head orientations	Multitude of scan head orientations including 360° rotatable variant. More than 50 beam orientation variants. Additionally support for customisation and solution integration.	
Ingress Protection	Laser module: IP54 fan cooled, optional IP65 compressed air cooling Controller: IP55	
Operating temperature	5°C - 45°C	
Operating humidity	max. 90% RH, non-condensing	
Electrical supply	multivoltage 90-264V, 50/60Hz	
Input and Outputs, Interfaces		
Inputs/outputs	Multiple inputs and outputs available e.g. extractor, compressed air-kit, encoder, product detect (NPN, PNP), beacon and interlocks, standard GPIO, additional optional GPIO available.	
Interfaces	Ethernet, USB, Dynamark Protocol	
Options		
Accessories	Extraction including optimised shrouds, airknife for lens cleaning, multiple brackets, cables and stands for integration support	
Certification	Marking: CE*, cTUVus, UKCA / Fulfills requirement: NRTL, ROHS, FDA listed, EMC, FCC	

* Partly Completed Machinery as per Machinery Directive (2006/42/EC), CE marking according to ROHS (2011/65/EU) and EMC(2014/30/EU)



TALK TO AN EXPERT

Contact details: solutions@domino-na.com
Telephone: +1 800 444 4512
Website: www.domino-na.com